

Company

SECIL's highly automated factory in Turkey and Belarus produce thousands of different seals every year, with a high level of quality management for different sectors. We have know-how regarding rubber mixing, moulding, machinery, rubber extrusion, and injection. Experience on different production processes like covered seals, mono, co-ex, tri-ex, with cord, metal insert or many others.

Seal Quality & Performance

SECIL quality controls from incoming raw materials to finished products are made by specialists independent of the production process of Secil. Tests are also made by third part controlling company upon demand. This double quality control guarantees a constant quality of all SECIL products.

Lale (Tulip) & Others

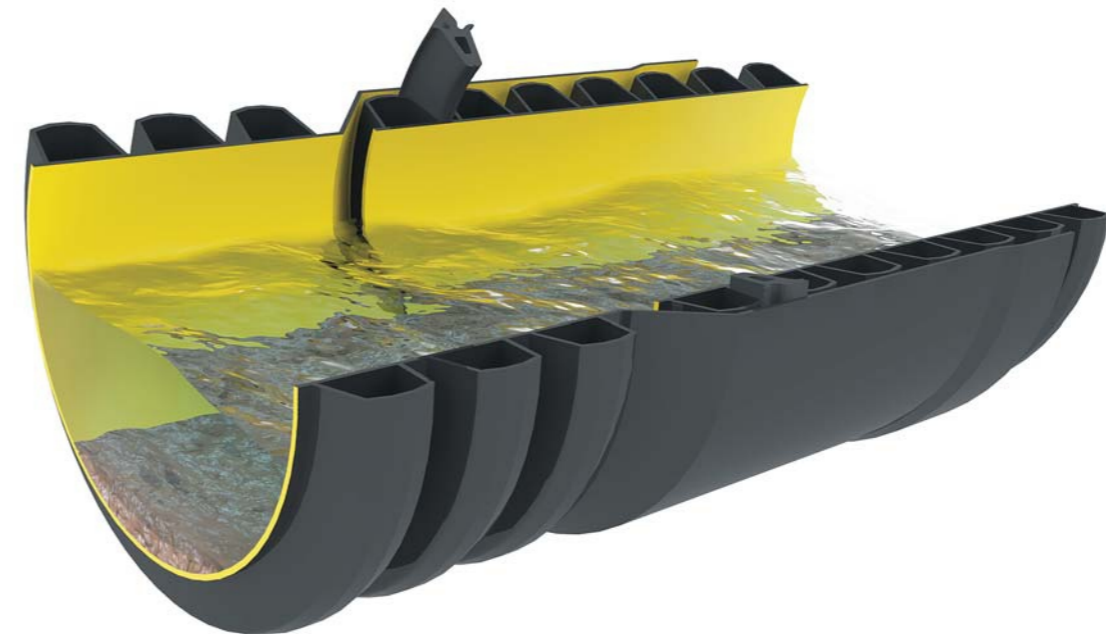
Seals for Corrugated Applications

CERTIFICATIONS

SEÇİL KAÜÇÜK extensively involved with standardization committees and collaboration with leading testing institutes and authorities around the world. SEÇİL KAÜÇÜK is also a customer-driven company. If customers require certificates that demonstrate compliance with various standards SEÇİL KAÜÇÜK will apply for the certification process at the competent institutions.



Example of authorities Seçil Kauçuk cooperating with



FACTORY / HEAD OFFICE

Tarsus Adana Karayolu 7. Km. 33400 Tarsus-Mersin / TURKEY
Phone: +90 324 616 11 40 Fax: +90 324 616 04 04
Web: www.secitr.com E-mail: secitr@secitr.com

EASTERN EUROPEAN BRANCH

Secil Polska Sp. Z.O.O. Office & Warehouse
Ul. Grunwaldzka 105a 83-300 Pruszcz Gdanski NIP 593-23-31-301
Tel: +48 (58) 683 37 59

SCANDINAVIA BRANCH

Secil Rubber Nordic Office & Warehouse
Malmstengatan 34, 33141 Varnamo - Sweden
Tel: +46 73 087 42 51

CENTRAL EUROPEAN BRANCH

Secil Kautschuk Deutschland GMBH Office
Aarstrasse 238 65232 Taunusstein
Tel: +49 6128 247 878

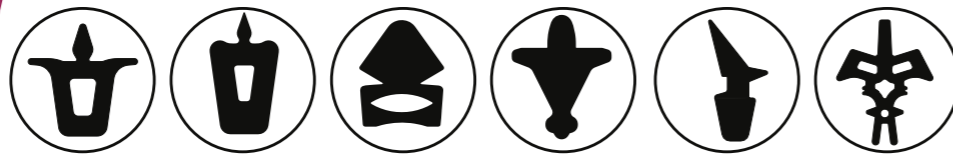




Corrugated, SWP (Structural Wall Pipe) Seals

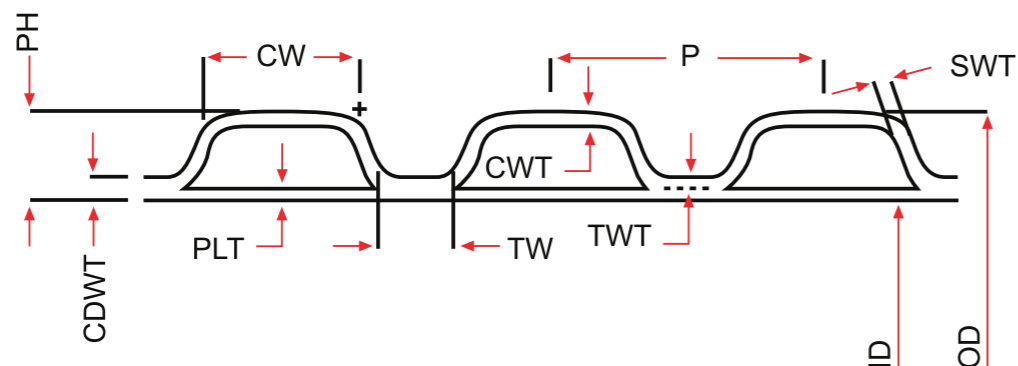
The pipe equipment, materials and the process to produce corrugated pipes are different from country to country. There are no international standards defining the geometry of the pipe groove and bell. But also the applications of, or requirements for the seals are different.

SECIL corrugated pipe seals and fittings for underground drainage and sewerage are based on engineered solutions, fast design and prototyping on broad experience.



We either have the right seal, select and model the most appropriate seal profile or design new!

Pipe Dimensions



Pitch (P)
Profile Height (PH)
Inside Dia. (ID)
Outside Dia. (OD)
Crest Width (CW)
Trough Width (TW)
Crest Wall Thickness (CWT)
Trough Wall Thickness (TWT)
Side Wall Thickness (SWT)
Pipe Liner Thickness (PLT)
Could Plug Dia.
Compr. Double Wall Thk. (CDWT)

Material

- **EPDM** rubber mixing is our main strength.
- SBR, NBR or different material are available on inquiry.
- In all cases, we use compound from our own mixing facilities.
- Ready **EPDM** compound 40-50-60-70 IRHD according to TSE and EN 681-1
- Other standards are available on request.
- **EPDM** is the most popular material protected against ozone and high chemical resistance.
- Oil resistant grades are available on request.
- **EPDM** can be expected to outlast the pipes lifetime.

Seal Packing & Marking

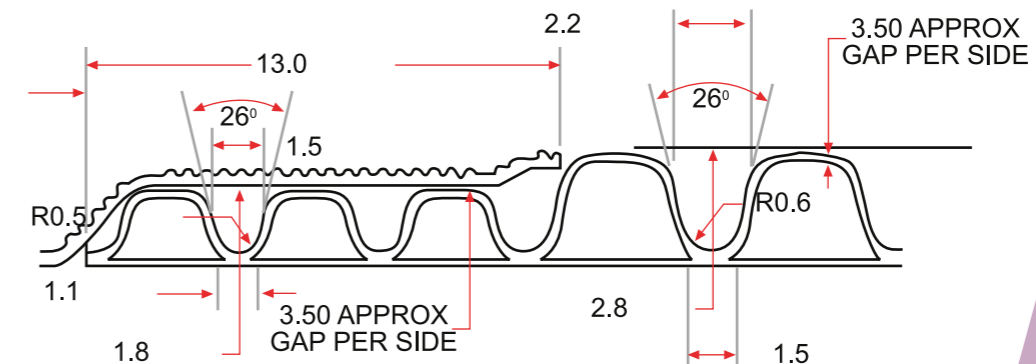
- Different packing possibilities prepared on our customer needs.
- Secil seals are marked with seal dimension and the date of manufacture.
- The box is labelled with the corresponding data.

Seal Design & Requirements

Secil work closely together with pipe and machine manufacturers with regard to design of correct corrugated pipe seals.

We have know-how regarding pipe production and seal assembly. We can also provide technical support to our customers with sales support in different languages in a range of different countries.

Sample Assembly



- We need detail pipe drawing from the customer volume for each DN.
- We suggest the most appropriate seal and we will offer our price indication.
- The customer provides us with pipes, both spigot and bell, 1.0-1.5 metres in length each. We will measure and check tolerance with the customer.
- Prototype seal and test report delivered to the customer.
- Customer's approval as the final step prior to serial production.

* Values and properties shown in diagrams and tables are not subject to any guarantees. Our warranty is limited to the values and properties as required by the relevant standards.
* Our literature, data sheets and recommendations represent our knowledge at the time of printing but are in no way legally binding on us. Our "General Conditions of Sale" apply to all sales.

